

EP800

Generator Installation



Thank You!

Thank you for making BLUETTI a part of your family.

From the very beginning, BLUETTI has tried to stay true to a sustainable future through green energy storage solutions while delivering an exceptional eco-friendly experience for our homes and our world.

That's why BLUETTI makes its presence in 100+ countries and is trusted by millions of customers across the globe.



Copyright © 2024 Shenzhen PowerOak Newener Co., Ltd. All rights reserved.

No part of this document may be reproduced or transmitted in any form or by any means without the prior written consent of Shenzhen PowerOak Newener Co., Ltd.

Notice

BLUETTI's products, services, and features are subject to the agreed-upon terms and conditions during purchase. Please note that some products, services, or features described in this manual may not be available under your purchase contract. Unless otherwise specified in the contract, BLUETTI makes no representations or warranties of any kind, express or implied, with respect to the contents of this manual.

The contents of this manual are subject to change without notice. Please get the latest version from:

<https://www.bluettipower.com/pages/user-guides>

If you have any questions or concerns about this manual, please contact BLUETTI support for further assistance.

Shenzhen PowerOak Newener Co., Ltd.

F19, BLD No.1, Kaidaer, Tongsha RD No.168, Xili street, Nanshan, Shenzhen, China

Web: <https://www.bluettipower.com>

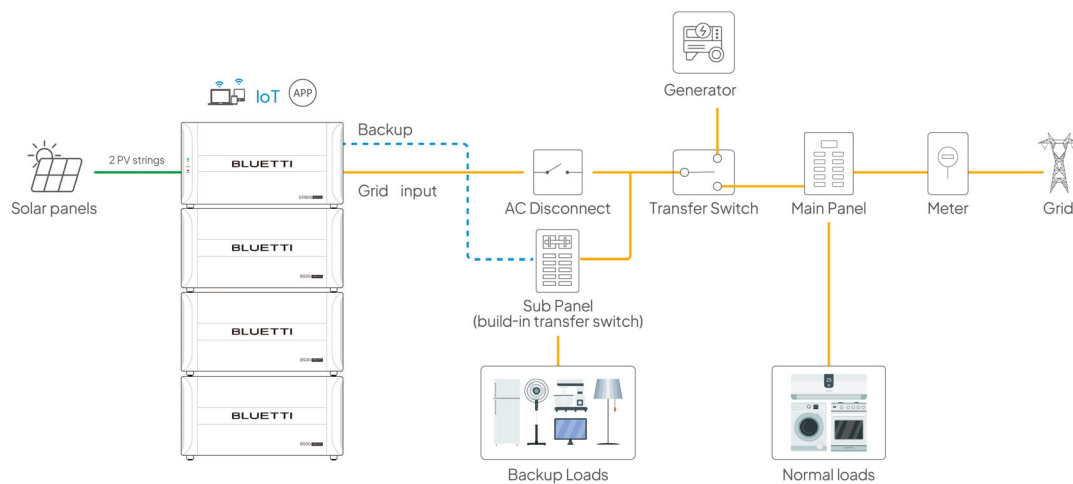
1. Working Principle

Manual Start: Enable the Generator startup settings in the BLUETTI app, and the system working mode operates as if in “Backup mode”. While the Generator is running, it supplies power to the load and fully charges the system. When the system is fully charged and the Generator stops running and switches to off-grid operation, the load is powered by the EP800 energy storage system.

Attention: Deactivate the Generator in the app when returning to grid power.

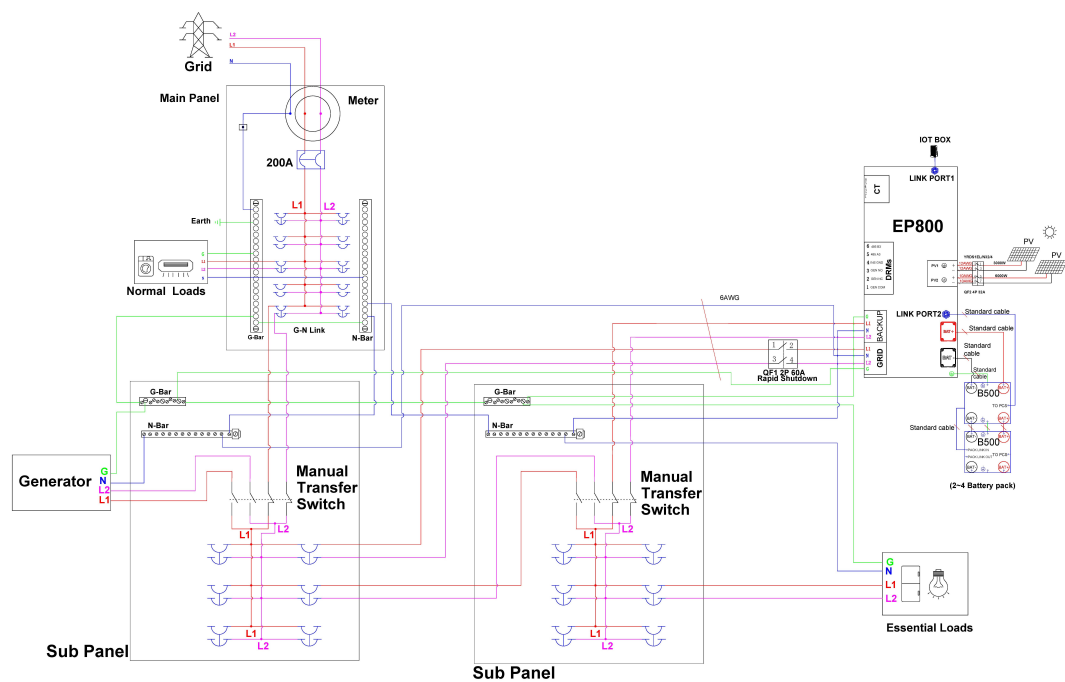
Automatic Start: “Enable Generator” Mode in the BLUETTI app, the Generator automatically starts by receiving the signal through the DRMs/COM communication cable. Without grid power, Generator supplies power to the load and fully charges the system as if in Backup mode. When the grid is restored it switches back to grid power, the Generator stops running and the system supplies power to the loads.

Note: Don't forget to disable the “Enable Generator” Mode in the app when grid restored.

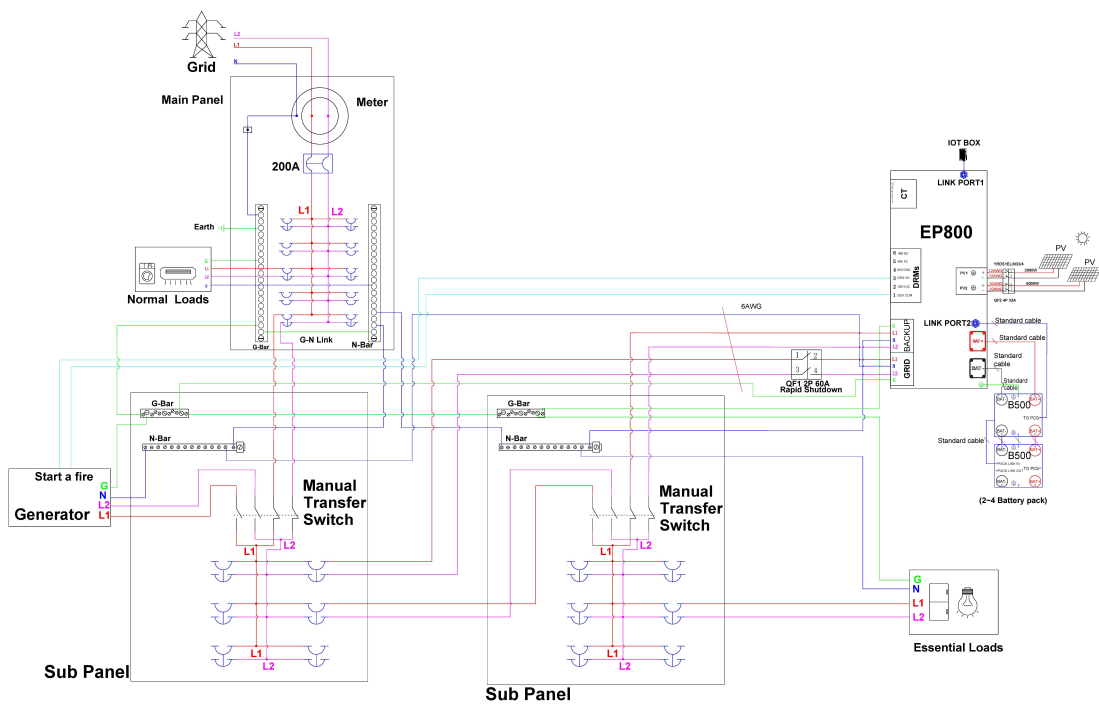


2. Electrical Diagrams

Manual Start



Automatic Start



Note: The EP800 electrical diagram has no CT on the grid side.

3. Procedures

Step 1: Wiring

Connect the cables according to the electrical diagrams above.

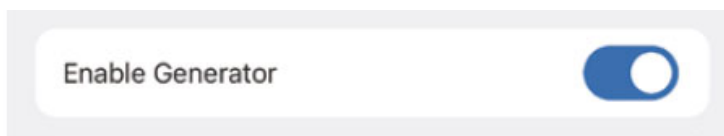
Note: Install a transfer-switch between the grid and the Generator.

Step 2: Power on

Press and hold the battery power button to activate the energy storage system. Refer to the product's user manual and related materials for detailed instructions.

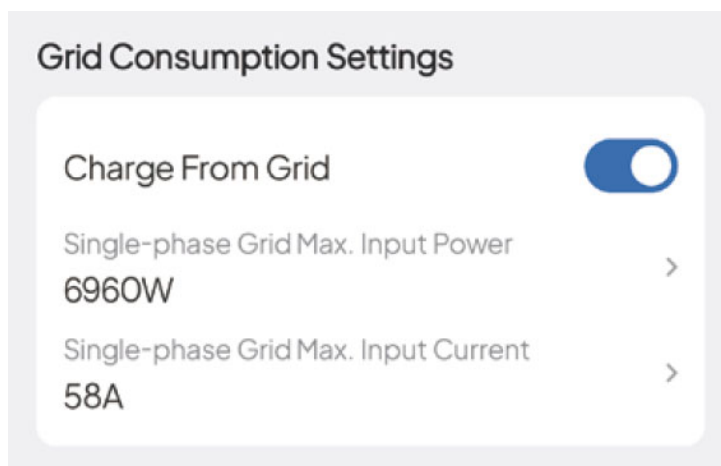
Step 3: Enable Generator

Access the "Advanced Settings" page in the app and turn on the "Enable Generator" Mode. Refer to the product's app user manual for detailed instructions.



Step 4: Configure Grid Input

Access the "Advanced Settings" page in the app and set the grid input limits. Be sure to set the power and current below 80% of the Generator's rating. Refer to the product's app user manual for details.



Step 5: Initiate

Turn on the "System Switch" to enable the Generator via the app.

4. Precautions

- The Generator application cannot be enabled at the same time as the AC coupling application/micro-inversion application.

- The power limit and current limit at the grid inlet cannot be greater than 80% of the diesel engine rating.
- When the power grid exists, a mutually exclusive switch is required between the power grid and the diesel engine.
- Use only compatible Generators.
- Not all generators are compatible with EP800 , please contact BLUETTI before installation

5. Software Version (minimum required version)

EP800 ESS: ARM502711, DSP502612, PBOX904311, BCU102514.