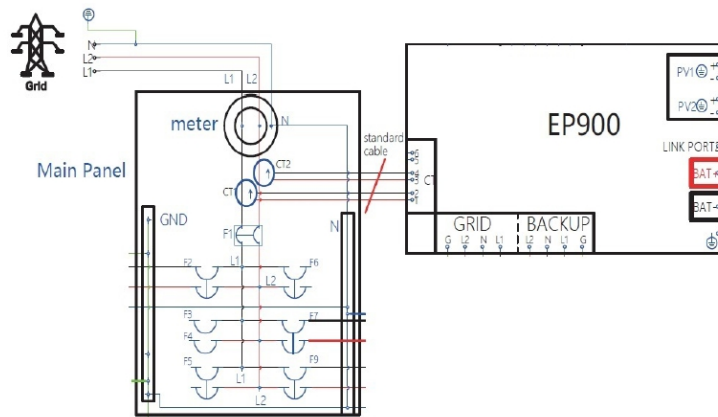


How to solved the issue of CTs on grid side

1. Why we need attach CT1 and CT2

CT is used for detecting the current which consuming from home appliances,



The arrow points to the grid.

NOTE:

1. The arrow inside the CT points to the grid.
2. Phase sequence: L1-L1, L2-L2 .
3. The CT should be tied to the L1, L2 cables of the main circuit breaker of the grid.

785 CT Port

Table 7-7			
No.	Definition	Function	Remarks
1	CT L1+ (White)	CT output positive terminal	Connect to the Phase L1 CT in the grid.
2	CT L1- (Black)	CT output negative terminal	
3	CT L2+ (White)	CT output positive terminal	Connect to the Phase L2 CT in the grid.
4	CT L2- (Black)	CT output negative terminal	
5	NC	/	/
6	NC	/	

2. What kind of CTs we can use.

AKH-0.66 K-Φ16



AKH-0.66 K-Φ24



or

Specification : 200A/333mV ,Ø16mm

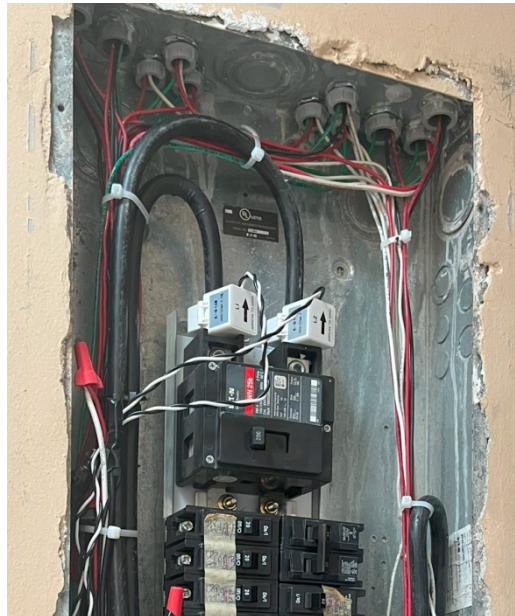
200A/333mV ,Ø24mm

3. When we need attach CTs on L1 and L2 of grid utility input.

Only for single set of EP900 .If 2 sets of EP900 connected in parallel ,please use the smart meter.

4. How CTs should be tied?

The CT should be tied to the L1, L2 cables of the main circuit breaker of the grid.



3.9.5 CT (Current Transformer) Interface

3-9 CT interface

PIN	Definition	Function	Remarks
1	CT-L1+ (Red)	CT positive wire	Connect to current transformer of L1 phase
2	CT-L1- (Black)	CT negative wire	
3	CT-L2+ (Red)	CT positive wire	Connect to current transformer of L2 phase
4	CT-L2- (Black)	CT negative wire	
5	NC	/	/
6	NC	/	

Step1: Rotate the CT adapter cap counterclockwise and take it off.

Step2: Thread the CT adapter cable into the connector cap and insert the signal cable into the corresponding connector pins.

Connection between the pins and connector terminals:

Pin 1 to red;

Pin 2 to black;

Pin 3 to green;

Pin 4 to white;

Pin 5/6 not connected.

Step3: Tighten the screws of the connector with a screwdriver.

Step4: Make sure the cables are secured until they can't be pulled out.

Step5: Tighten the adapter cap and nut clockwise.

5. How to solve the issue of phase error of L1 and L2 when using the auto CT test in the APP

Swap the CT1 to CT2 ,and Swap the CT2 to CT1