

# AC240

## Portable Power Station V1.0

BLUETTI App User Manual



## Thank You

Thank you for making BLUETTI a part of your family.

From the very beginning, BLUETTI has tried to stay true to a sustainable future through green energy storage solutions while delivering an exceptional eco-friendly experience for our homes and our world.

That's why BLUETTI makes its presence in 100+ countries and is trusted by millions of customers across the globe.



**Copyright © 2023 Shenzhen PowerOak Newener Co., Ltd. All rights reserved.**

No part of this document may be reproduced or transmitted in any form or by any means without the prior written consent of Shenzhen PowerOak Newener Co., Ltd.

## **Notice**

BLUETTI's products, services, and features are subject to the agreed-upon terms and conditions during purchase. Please note that some products, services, or features described in this manual may not be available under your purchase contract. Unless otherwise specified in the contract, BLUETTI makes no representations or warranties of any kind, express or implied, with respect to the contents of this manual.

The contents of this manual are subject to change without notice. Please get the latest version from: <https://www.bluettipower.com/pages/user-guides>

If you have any questions or concerns about this manual, please contact BLUETTI support for further assistance.

## **Shenzhen PowerOak Newener Co., Ltd.**

F19, BLD No.1, Kaidaer, Tongsha RD No.168, Xili street, Nanshan, Shenzhen, China

Web: <https://www.bluettipower.com>

# Contents

<b>1. Introduction</b>	<b>01</b>
<b>2. Getting Started</b>	<b>01</b>
2.1 Download the App	01
2.2 Sign up	01
2.3 Log in	02
2.4 App Languages	02
2.5 Exit	03
<b>3. Binding</b>	<b>03</b>
3.1 Bluetooth	04
3.2 SN	05
3.3 QR Code	05
<b>4. Connection</b>	<b>05</b>
4.1 Bluetooth Connection	06
4.2 WiFi Connection	07
<b>5. Real-time Monitoring</b>	<b>09</b>
5.1 Operation Status	09
5.2 Charging / Discharging Status	10
5.3 Battery Pack Status	10
<b>6. Device Management</b>	<b>11</b>
6.1 Settings	11
6.2 UPS Mode	12
6.3 ECO Mode	14
6.4 Advanced Settings	15
<b>7. Unbinding</b>	<b>16</b>
<b>8. Account Security</b>	<b>16</b>
8.1 Modify Avatar & Username	16
8.2 Change Password	16
8.3 Cancel Account	17
<b>9. Practices</b>	<b>17</b>
9.1 Device Control in Offline Mode	17
9.2 Device Sharing	17
9.3 Firmware Upgrade	18

# 1.Introduction

The BLUETTI application allows you to monitor and control your AC240 portable power station via Bluetooth or WiFi, with features like Device Control, Real-time Data Collection, Alarm, Firmware Upgrade, After-sales Service, etc.

The App is divided into five sections: Home, Forum, Store, Service, and Me, which make it easy for you to purchase products, enjoy services, and manage your AC240 effectively.

## 2.Getting Started

### 2.1 Download the App

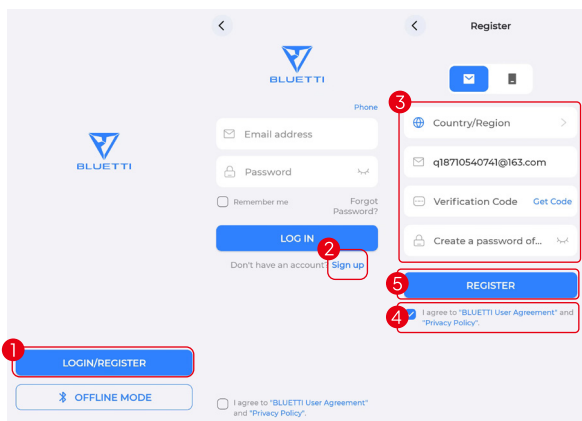
Scan the QR code below to download the BLUETTI App, or search for "BLUETTI" in the App Store or Google Play.



Supported operating systems: iOS 11.0 or above, Android 8.0 or above.

### 2.2 Sign up

1. Open the App and tap **LOG IN/REGISTER**.
2. Tap **Sign up**.
3. Enter your email address and the verification code.
4. Tick the checkbox.
5. Tap **REGISTER** to create your BLUETTI account.



**Note:** Currently, the App only supports registration using email address. If you don't receive the email with verification code, check your Junk or Spam folder. If you still can't find the email, try "Get Code" again as there may be a delay. If the code is still unavailable, please contact BLUETTI Customer Service for assistance.

## 2.3 Log in

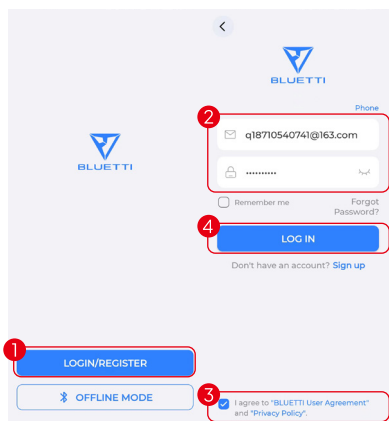
1. Open the App and tap **LOGIN/REGISTER**.

2. Enter your account details.

3. Tick the checkbox.

4. Tap **LOG IN**.

Note: If you forget your password, tap **Forgot Password?** to reset it.

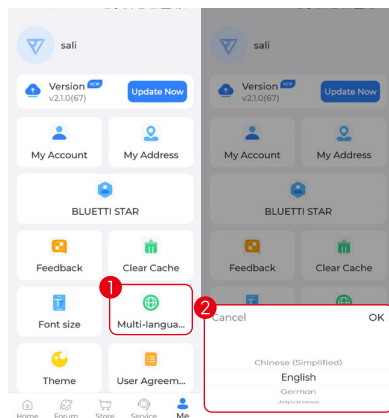


## 2.4 App Languages

1. Go to the **Me** page and tap **Multi-language**.

2. Select the language you want, and tap **OK** to save the change.

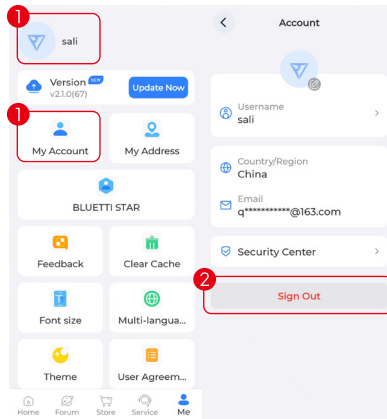
**Note:** By default, the App adapts to the language settings of your mobile device's operating system.



## 2.5 Exit

1. Go to the Me page, and tap on your avatar or My Account.

2. Tap Sign Out on the Account page.



## 3.Binding

The BLUETTI App offers you multiple ways to bind and connect to your AC240. You can directly connect to your AC240 either by using the App's OFFLINE MODE, or by logging in and using the Bluetooth option on the Home page. However, in these cases, you may not be able to perform a firmware upgrade, modify advanced settings, or connect to WiFi for even remote control, etc.

To get the most out of the BLUETTI App and unlock its full potential, you're strongly recommended to follow these steps to get started:

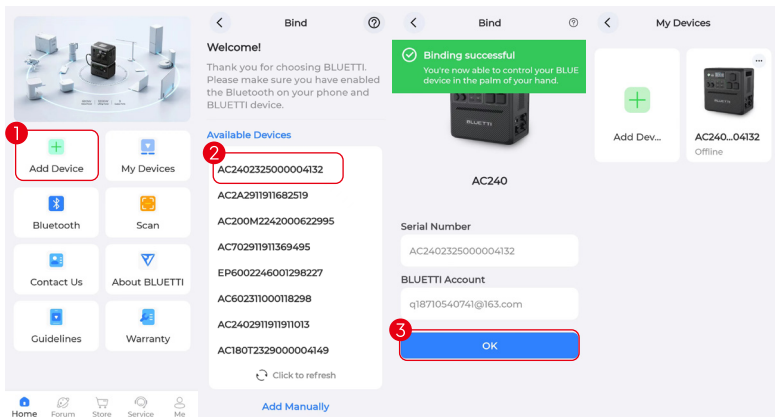


**Note:** To proceed with the binding process, make sure your AC240 is powered on with Bluetooth enabled (if necessary). You may opt to bind it via Bluetooth, SN, or QR code. An AC240 unit can be bound to a single user, but you can also share it with other BLUETTI App users for collaborative device control. Please refer to Device Sharing for details.

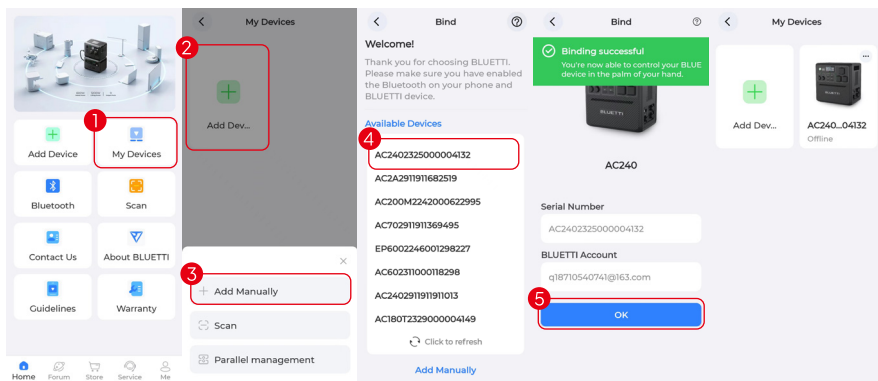
### 3.1 Bluetooth

1. Tap **Add Device** on the **Home** page, or tap **My Devices > Add Device > Add Manually**.
2. On the **Bind** page, select your AC240 (name starts with AC240) from the **Available Devices** list, and tap **OK** to complete the binding.
3. You can view the bound devices on the **My Devices** page.

**Note:** Make sure you've enabled Bluetooth and location service (e.g. GPS) on your phone. If you can't find your AC240, get closer and **Click to refresh** the list. (recommended range: 5m).



Click "Add Device" on the Home page to add a device



Click "My Devices" on the Home page to add a device



### 3.2 SN

1. Tap **Add Device** on the **Home** page, or tap **My Devices > Add Device > Add Manually**.
2. At the bottom of the **Bind** page, tap **Add Manually**.
3. Enter the device model and SN.
4. Tap **OK** to complete the binding.

### 3.3 QR Code

1. Tap the **Scan** on the Home page, or tap **My Devices > Add Device > Scan**.
2. Scan the QR code on your AC240 unit.

## 4.Connection

The BLUETTI App supports connection via Bluetooth or WiFi. Whether you've registered or not, you can choose to connect via Bluetooth. However, the WiFi option is only available if you have completed the registration process.


**Note:** The features listed below are not available when connecting to the AC240 by scanning a shared QR code.

Features	Offline Mode / Direct Bluetooth Connection	Offline Mode / Direct Bluetooth Connection	Offline Mode / Direct Bluetooth Connection
Device Sharing	×	√	√
Firmware Upgrade	×	√	×
UPS Mode	√	√	√
ECO Mode	√	√	√
Advanced Settings	×	√	√

## 4.1 Bluetooth Connection

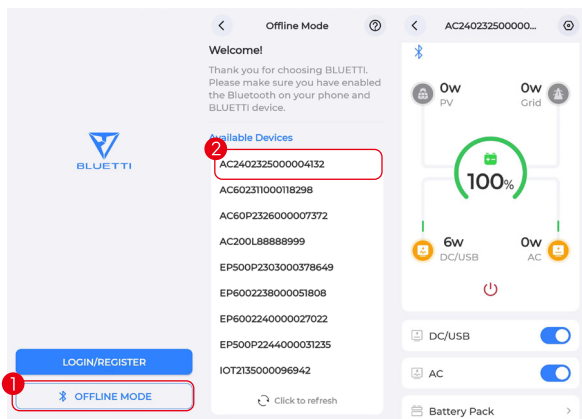
**Note:** Make sure your AC240 is powered on with Bluetooth enabled, and you've enabled Bluetooth and location service (e.g. GPS) on your phone. For a stable connection, keep your phone and AC240 close together (recommended range: 5m).

If you haven't registered yet, please follow the steps below:

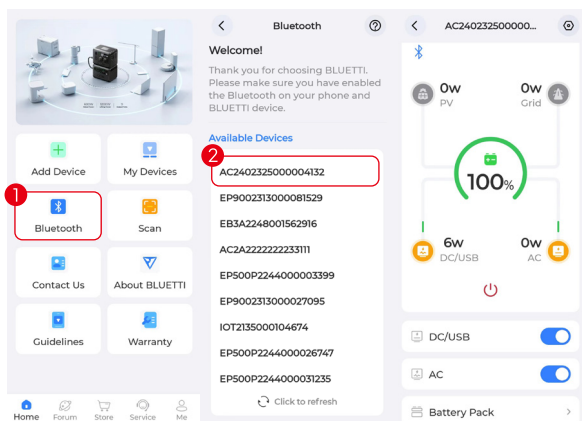
1. Open the App and tap  **OFFLINE MODE**.
2. Select it (name starts with AC240) from the **Available Devices** list on the **Offline Mode** page, and tap its SN to connect.

**Note:** If you can't find your AC240, get closer and **Click to refresh** the list.

3. You'll be directed to the operation status page upon successful connection.



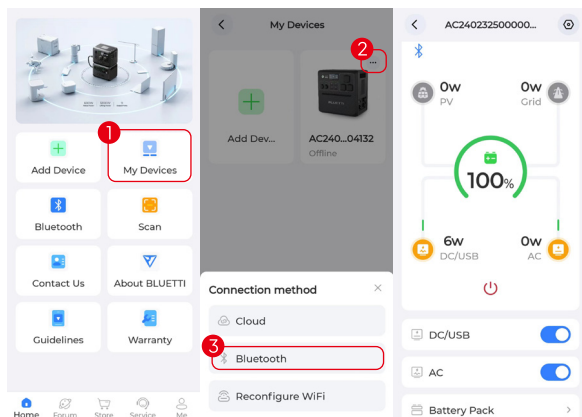
If you've already logged in but need to use it in an environment without a network connection, tap **Bluetooth** on the **Home** page. Select it (name starts with AC240) from the **Available Devices** list on the **Bluetooth** page. You'll be directed to the operation status page upon successful connection.



If you've already logged in and successfully bound your AC240 with the network connected, please follow the steps below:

1. Tap **My Devices** on the **Home** page.
2. Tap ... in the upper right corner of the device you want to connect.
3. Tap **Bluetooth** to connect.
4. You'll be directed to the operation status page upon successful connection.

**Note:** Once you've set Bluetooth as the default connection mode, you can simply tap the device image to establish a Bluetooth connection.



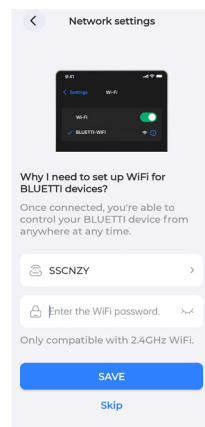
## 4.2 WiFi Connection

To get started, you need to configure the network first.

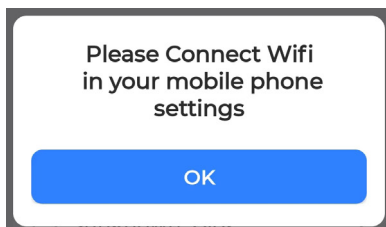
**Note:** Make sure that the AC240's WiFi feature is enabled, and place your AC240 within the range of an available WiFi network. Also, double-check that your mobile device has a strong and stable network signal.

### Configure the network


With a successful binding, you'll be directed to the **Network settings** page as shown below. Select your WiFi from the available list. Fill in its password in the pop-up and **SAVE** it. You can also **Skip** it to configure the network later.




If a pop-up appears as shown below, tap **OK** and then enable the WiFi before configuring the network.



Even if you have connected your AC240 via Bluetooth, you can still configure the network settings.

1. Tap  in the upper right corner of the operation status page to enter the **Setting** page.
2. Tap **Network settings**.
3. Change the configuration in the pop-up and **SAVE** it.


**If you need to change to another WiFi network, please follow the steps below:**

1. Go to the **My Devices** page and tap  in the upper right corner.
2. Tap **Reconfigure WiFi**.
3. Fill in the related network information and **Save** it.

**Note:** The AC240 supports 2.4GHz WiFi only.

## Connect to AC240

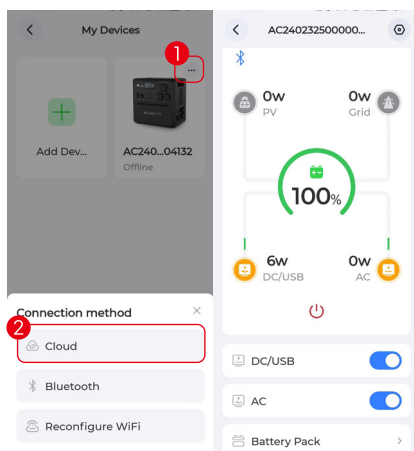
Once the App is connected to your AC240 via WiFi, you can manage your AC240 from anywhere at any time, as long as your mobile phone has internet access and your device maintains a stable WiFi connection.

1. Go to the **My Devices** page, and tap  in the upper right corner of the device you want to connect.

2. Tap **Cloud** to connect.

3. The App will jump to the operation status page when the connection is successful.

**Note:** If you've set the default connection mode as Cloud, you can also establish a WiFi connection by directly tapping on the device image.

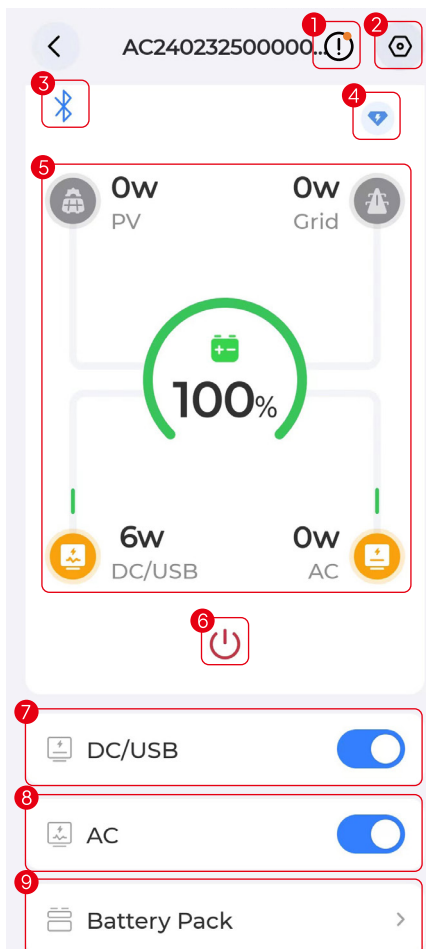


## 5. Real-time Monitoring

The App provides you with important details like the current battery level, charging status, output frequency, and other key metrics, allowing you to monitor and track the performance of your AC240 effectively. Additionally, in case of any alarms, you can view real-time alerts so that you can take immediate action to deal with any issues in a timely manner.

### 5.1 Operation Status

After connecting the App to your AC240, you can check its basic operation status, including charging status, battery pack, and more.



Tap to check the current alarm(s) and alarm history.



Tap to check and change system settings, like Firmware Upgrade, Advanced Settings, Charging Mode, Working Mode, Device Sharing, etc.



Bluetooth / WiFi connection successful.



Charging in Turbo / Silent / Standard Mode.

⑤ Charging / Discharging Status

Please refer to **Charging / Discharging Status** for details.



Tap to power off the AC240.

Note: The AC240 can only be powered on with the power button on the AC240 unit.

⑦ DC / USB Power Button

Tap to turn on the DC output and power compatible devices.

⑧ AC Power Button

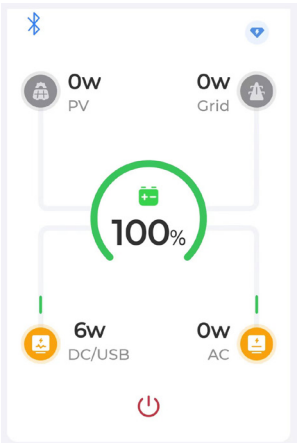
Tap to turn on the AC output and power compatible devices.

⑨ Battery Pack

Tap to check the information of the battery pack. Please refer to **Battery Pack Status** for details.

## 5.2 Charging / Discharging Status

It shows how the AC240 is charging and discharging.



PV generation. It shows how much power the AC240 is drawing from your rooftop solar or solar panel(s). Tap to view more details.

Grid charging. It shows how much power the AC240 is drawing from the grid. Tap to view more details.

SoC (State of Charge). It indicates the remaining battery level.

DC load consumption. It shows how much DC power is supplying to your household appliance.

AC load consumption. It shows how much AC power is supplying to your household appliance. Tap to learn more about where the power is going.

## 5.3 Battery Pack Status


It shows the status of connected **battery packs**. Tap Battery Pack in the operation status page and you'll be directed to the **Battery Information** page.

Tap the pack you want to check, e.g. **Pack 1** to view its operating status.

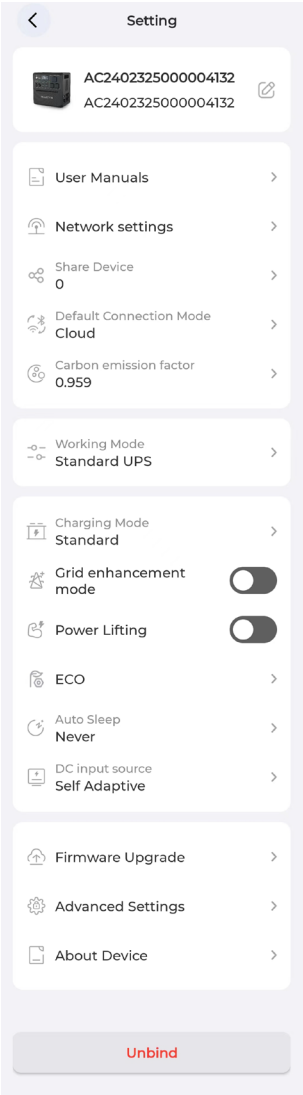
Pack1	
SoC	99%
BMS Status	Standby
Battery Parallel	
Fault/Alarm	

Item	Description
Pack 1	Battery pack name. The displayed  icon indicates that the battery pack is connected.
SoC	State of Charge. The remaining battery level.
BMS Status	The battery status includes three types: Charging: The battery pack is charging. Discharging: The battery pack is discharging. Standby: The battery is not connected to input or output sources, indicating no ongoing charging or discharging activities.
Battery Parallel	means that the battery pack is connected in parallel with AC240. means that it's not connected in parallel with AC240.
Alarm	means that the AC240 is operating well. means that an alarm occurred. Tap it to view the details.

# 6.Device Management

After connecting the device, on the operation status page, tap  to access the **Setting** page. You can optimize your power usage by customizing various settings, including the Network settings, Device Sharing, Working Mode, Charging Mode, and other relevant configuration.

## 6.1 Settings



**Device Name:** Tap  to modify.

**User Manuals:** Tap to view the product documentation.

**Network settings:** To configure the WiFi network. Only available when you connect to the AC240 via Bluetooth. For details, please refer to **Configure the Network** in the WiFi Connection.

**Share Device:** Tap to share your AC240. Please refer to **Device Sharing** for details.

**Default Connection Mode:** To modify the device's default connection mode. Once saved, whenever you tap on the device image on the **My Device** page, it'll automatically connect using the chosen mode.

**Note:** The App is programmed to use the Cloud as the default connection mode.

**Carbon emission factor:** To calculate your reduced carbon emission.

**Note:** Reduced carbon emission (kg) = Solar power generation (kWh) × Carbon emission factor

**Working Mode:** Tap to set the UPS Mode.


**Charging Mode:** The AC240 supports three AC charging modes: Turbo Charging: 0%-80% charge in 45 minutes. Ideal for quick charging.

Standard Charging: fully charged in about 3 hours. Reduces battery wear and tear for long battery life.

**Silent Charging:** low operation noise (<50dB). Offers a quiet, low-power operation.

**Note:** The AC240 is set to charge in Standard mode by default, and it's advised to stick with this mode for your regular charging needs.

**Grid Self-adaption Mode:** To provide a stable and continuous grid charging.

**Power Lifting Mode:** To handle resistive loads up to 3,600W.  icon displayed in the lower right corner of the LED screen when enabled.

**Note:** This mode is only suitable for resistive loads with a power rating between 2,400W-3,600W.

**ECO:** Please refer to the **ECO Mode** for details.

**Auto Sleep:** Choose screen sleep time (30s, 1min, 5min, always on). The default screen sleep time is 1 minute.

**DC Input Source:** Choose from three options as appropriate:

**Self-Adaption:** The AC240 automatically detects the source and categorizes it as PV (solar) or other. When connected to a solar source, it activates the MPPT charge controller to optimize charging efficiency.

**PV:** Select this mode when charging from a solar source, including third-party options, to maximize efficiency.

**Other:** Select this mode for non-PV sources.

**Firmware Upgrade:** Tap to upgrade your device. Only available when you connect to the AC240 via Bluetooth.

**Note:** For a stable connection, keep your phone and AC240 close together (recommended range: 5m).

**Advanced Settings:** To check and change more settings. Please refer to **Advanced Settings** for details.

**About Device:** The information about AC240 and other related devices.

**Unbind:** Tap to unbind your BLUETTI account with the AC240.

## 6.2 UPS Mode

With the UPS mode enabled, the AC240 can provide uninterrupted power to your essential appliances during a power outage. Through the BLUETTI App, you can choose from four different UPS modes to meet your specific needs.

**Note:** Disable the Grid Self-adaption Mode when using the UPS function.

### Standard UPS Mode

**Ideal for areas with an unreliable power grid.** The AC240 and expansion batteries (if any) are always charged using available solar or grid power. When the battery is fully charged, the grid can bypass AC240 and power your loads directly. In the event of a grid failure, the AC240 seamlessly takes over to keep your appliances running without interruption.

**Note:** This mode is only available when two AC240 units are connected in parallel.



### Time Control UPS Mode

**Suitable for areas with fluctuating electricity prices based on time-of-use.** You can set State of Charge (SoC) limits and specific charging and discharging schedules to optimize cost savings.

1. SoC Setting: SoC Low value and SoC High value.

**SoC Low:** It's set to 20% by default. When the AC240 is connected to the power grid, it'll stop supplying power to your appliances once the battery level drops below 20%. However, if there is no power grid available, the AC240 will continue to power your appliances until the battery level reaches 0%.

**SoC High:** It's set to 80% by default. This means that the AC240 will stop charging from the grid when the battery level reaches 80%, and seamlessly switch to solar charging for the remaining capacity.

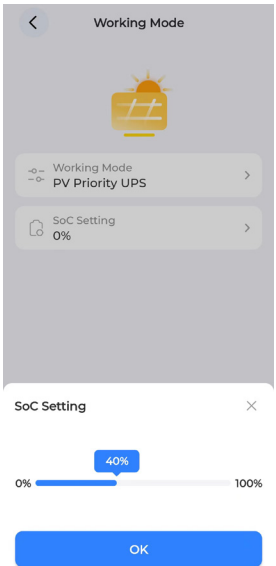
2. Manage Charge/Discharge Time:

**Charging Time:** Schedule the AC240 to charge during off-peak hours when electricity costs are lower.

**Discharge Time:** Schedule the AC240 to supply your appliances during peak hours when electricity costs are higher.

### PV Priority UPS Mode

**Suitable for areas with abundant solar resources and stable grid.** In this mode, the AC240 primarily charges from solar energy to save electricity. You can also set a specific State of Charge (SoC) threshold. As the AC240 charges from the grid and reaches the desired SoC level, it seamlessly transitions to solar charging for the remaining capacity.

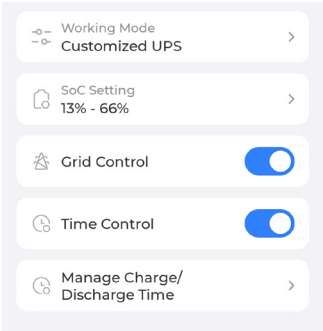


### Customized UPS Mode

In this mode, you can create personalized schedules for charging and discharging, set battery SoC limits, and control the grid charging switch.

When the Grid Control is off, the AC240 won't use grid power to charge.

**Note:** The charge/discharge schedule, SoC limits, and grid charging availability also take effect in Time Control UPS Mode.



## 6.3 ECO Mode

To help you save power and extend battery life, you can tap **ECO** on the **Setting** page to turn on the ECO Mode.

### AC-ECO

AC-ECO provides three options: Normal Mode, Deep Mode, and Off. The Normal Mode is enabled by default.

**AC-ECO Normal Mode:** In this mode, if the AC power output falls below a certain power level for a set period of time, the AC power will automatically turn off. To resume the AC output, turn on the AC Power Button.

**Note:** It's recommended to set the AC-ECO shutdown time to 4 hours and the power limit to 20W.



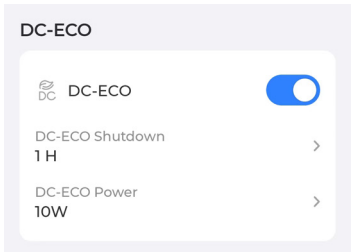
**AC-ECO Deep Mode:** In this mode, if no devices are connected to the AC output, the AC240 will enter sleep mode to save energy. When a device is connected, the AC240 will automatically wake up and supply power to the device.

**AC-ECO Off:** Disable the AC-ECO Mode.

### DC-ECO

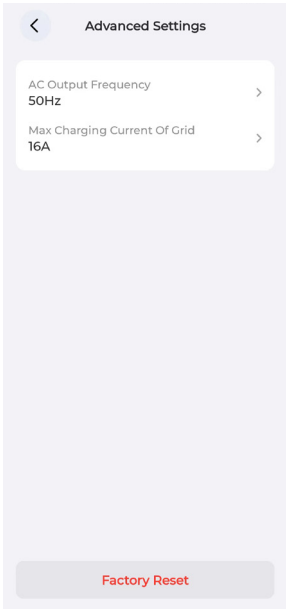
In this mode, if the DC power output falls below a certain power level for a set period of time, the DC power will automatically turn off. To resume the DC output, turn on the DC Power Button.

**Note:** It's recommended to set the DC-ECO shutdown time to 4 hours and the power limit to 10W.



**Note:** When the AC-ECO or DC-ECO is enabled, the **ECO** icon will be displayed at the top of the LED screen.

### 6.4 Advanced Settings

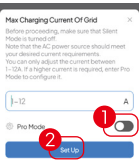


Tap **Advanced Settings** at the bottom of the **Setting** page to check and change more settings, including AC Output Frequency, Grid Max. Input Current, and Factory Reset, etc.

**AC Output Frequency:** Choose 60Hz or 50Hz for the AC240.

**Grid Max. Input Current:** If the grid current doesn't align with the set current, adjust it in the BLUETTI App.

**Note:** To set a value higher than the default 15A, access **Advanced Settings** and tap Set.

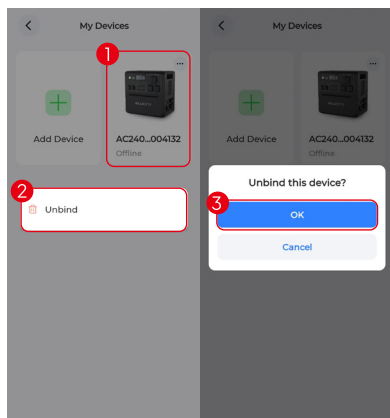


**Factory Reset:** To factory reset all the settings.

## 7. Unbinding

When you no longer want to manage the AC240, you have two options to unbind it.

1. On the **My Devices** page, press and hold the device image you want to unbind until the pop-up appears, and tap **Unbind**.
2. Tap **OK** in the **Unbind this device?** pop-up.



Or, tap **Unbind** at the bottom of the **Setting** page, and tap **OK** in the **Unbind this device?** pop-up.

## 8.Account Security

### 8.1 Modify Avatar & Username

1. On the **Me** page, tap on your avatar or **My Account**, and you'll be taken to the **Account** page.
  2. Tap on your avatar and you're required to take a photo or select a photo from your album.
- As for the name, tap on the **Username** and edit a new one. Tap **OK** to save the changes.

### 8.2 Change Password

1. On the **Me** page, tap on your avatar or **My Account**, and you'll be taken to the **Account** page.
2. Tap **Security Center** at the bottom.
3. Select the **Change Password** from the menu.
4. On the **Change Password** page, enter your passwords and tap **OK** to save the change.

**Note:** For safety purposes, it's recommended that you update the password regularly.

## 8.3 Cancel Account

1. On the **Me** page, tap on your avatar or **My Account**, and you'll be taken to the **Account** page.
2. Tap **Security Center** at the bottom.
3. Tap **Cancel Account**, and follow the prompts.

**Note:** Upon canceling the App account, the following information will be permanently cleared and cannot be recovered:


Identity and account information

Device binding and related information

After-sales records

## 9.Practices


### 9.1 Device Control in Offline Mode

If you haven't registered your AC240 yet, open the App and tap  **OFFLINE MODE** to connect directly. Select it (name starts with AC240) from the **Available Devices** list on the **Offline Mode** page.

**Note:** If you can't find your AC240, get closer and **Click to refresh** the list.

If you've already logged in, tap **Bluetooth** on the **Home** page. Select your AC240 from the **Available Devices** list on the **Bluetooth** page. After a successful connection, you can check and change the settings on the **operation status** page.

### 9.2 Device Sharing


1. Bind and connect the AC240. Please refer to **Binding** and **Connection** for details.
2. Tap  in the upper right corner of the operation status page.
3. Tap **Share Device**, and the App will jump to the **BLUETTI Share** page.
4. Tap **Yes** to generate a QR code.

**Note:** The generated QR code will be valid for 10 minutes. You can share the AC240 with up to 10 accounts at the same time.

### 9.3 Firmware Upgrade

**Note:**

- Only available when you connect to the AC240 via Bluetooth.
- For a stable connection, keep your phone and AC240 close together (recommended range: 5m).
- During the upgrade, you cannot perform charging, discharging, or any other operations.
- Do not exit the App until done.

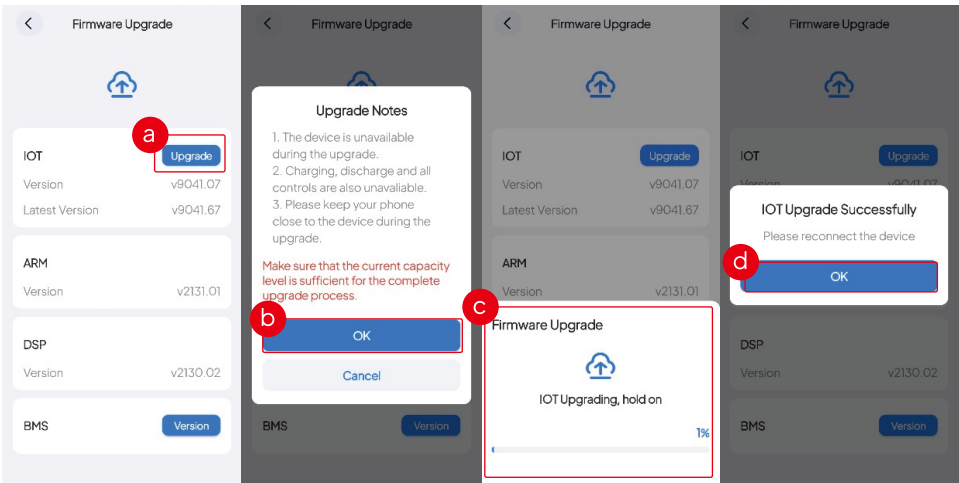
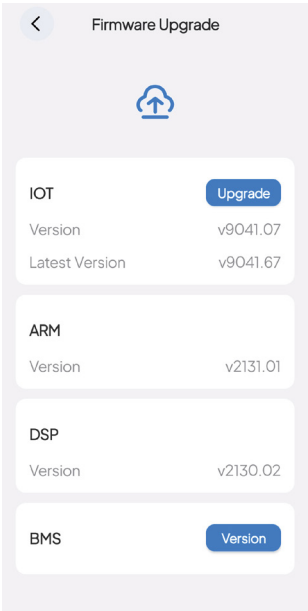
1. Log in to the App, and connect the device via Bluetooth.
2. Tap  in the upper right corner of the operation status page.
3. Tap **Firmware Upgrade** on the **Setting** page.
4. The App will jump to the **Firmware Upgrade** page.
5. Select the IoT, ARM, DSP, or BMS upgrade option.

#### IoT, ARM, and DSP Upgrade

The upgrade steps are the same for IoT, ARM, and DSP. Here's the process using IoT as an example.

**Note:** If the **Upgrade** button is available, you can upgrade the software to the latest version.

- a. On the **Firmware Upgrade** page, tap **Upgrade** on the right side of the IoT.
- b. Tap **OK** in the **Upgrade Notes**.
- c. The upgrade process begins, and the process bar indicates the status.
- d. Once the upgrade is completed, tap **OK** in the pop-up.



# BMS Upgrade

**Note:** If you have multiple battery packs, please upgrade each one separately.

- a. On the **Firmware Upgrade** page, tap **Version** on the right side of the BMS.
- b. Tap **Check For Update** under the battery pack information. If no new version is found, a note will indicate that there is no available firmware update for the battery pack.
- c. When a new BMS firmware version is detected, tap **OK** in the pop-up.

New battery pack firmware available, do you want to upgrade?  
Latest Version: v1043.99

OK

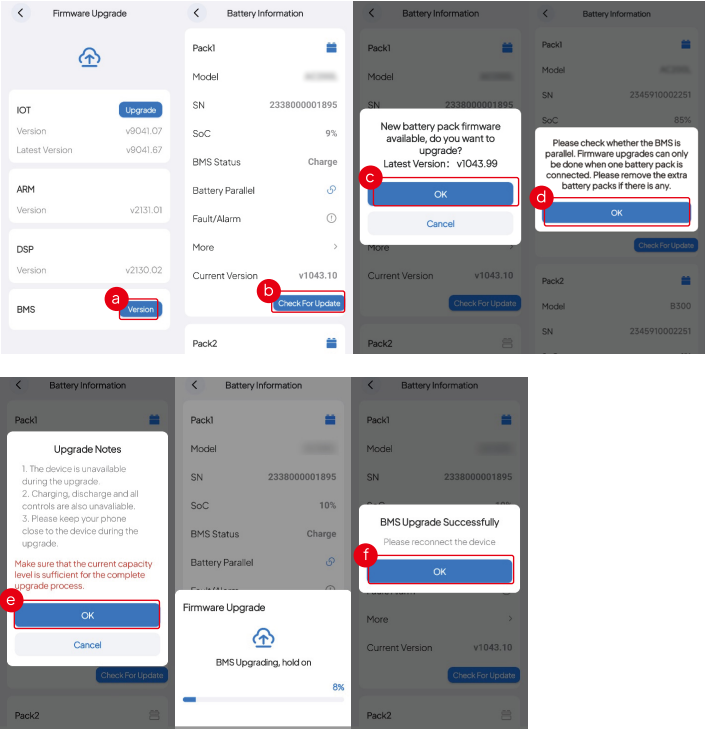
Cancel

- d. Tap **OK** again in the pop-up shown below.

Please check whether the BMS is parallel. Firmware upgrades can only be done when one battery pack is connected. Please remove the extra battery packs if there is any.

OK

- e. Tap **OK** in the **Upgrade Notes**.
- f. Once the BMS upgrade is completed, tap **OK** in the pop-up.





Just Power On